

# Lesson Three

**1. This road sign means,**

- A. Turn left
- B. One-way
- C. Single lane ahead



**2. A good way to maintain your following distance is**

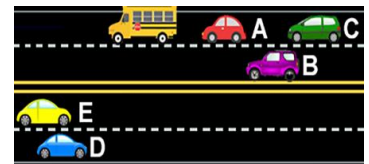
- A. Counting the seconds, it takes you to pass a sign after the car ahead of you has passed it
- B. Keep 100 feet distance at all the times
- C. Estimate the safe distance based on your experience

**3. If you see a pedestrian with wheelchair at an intersection**

- A. Stop and give right-of-way
- B. Slow down and pass through
- C. Honk your horn and flash headlights

**4. Which vehicles are required to stop for the school bus**

- A. A, B & C
- B. D & E
- C. A, B, C, D & E



**5. If road is divided, which vehicles are required to stop for the school bus**

- A. A, B & C
- B. D & E
- C. A, B, C, D & E



**6. You should not pass a vehicle**

- A. In inclement weather condition
- B. When there is broken white line
- C. When you cannot complete the passing safely

**7. Since the bicycles are considered as vehicles**

- A. Cyclist may use the whole lane
- B. Cyclist should give you the right-of-way
- C. Cyclists may use the highways

**8. At intersections with a four-way stop sign, you should**

- A. Proceed after all other vehicles moved
- B. Wait for your turn and proceed if way is clear
- C. Drive straight ahead only



**9. When you are making a turn**

- A. Adjust your speed
- B. Pay attention to the vehicle ahead of you
- C. Use the lane with least traffic

**10. An example of aggressive driving is**

- A. Frequent and improper lane change
- B. Having headlights on at daytime
- C. Passing other vehicles from right-side

**11. If you are tired or sleepy, you should,**

- A. Use an energy drink or coffee
- B. Change driver or stop for a break
- C. Continue driving

**12. If you stop on highways in case of emergency,**

- A. Stay inside if safe and use four-way flashers
- B. Stop at ramps only
- C. Walk to the emergency lane for safety

**13. Persons under age of 18, should always**

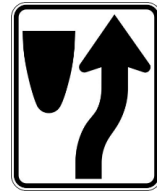
- A. Drive with a full licensed driver
- B. Have all passengers buckled up in most States
- C. Drive automatic vehicles only

**14. At night, you can avoid the glare of headlights, if you**

- A. Use tinted eyeglasses
- B. Look and drive closer to the right edge of the lane
- C. Turn on high beam headlights

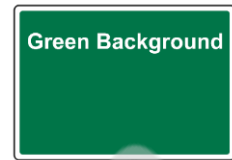
**15. This road sign means,**

- A. Stay to the right side of the sign
- B. Merge to the lane on right
- C. Road curves ahead



**16. A traffic sign with a green background,**

- A. Gives you warning
- B. Gives you speed limits
- C. Gives you the directions



**17. This road sign means**

- A. Intersection ahead
- B. Hospital ahead
- C. Railroad ahead



**18. When you approach a railroad crossing, you should**

- A. Expect a train at any time
- B. Cross the tracks when lights are flashing
- C. Stop before the tracks until train arrives

**19. High speed driving will**

- A. Cause damage in a collision be much severe
- B. Decrease the distance need to be stopped
- C. Increase the driver's reaction time

**20. This road sign means**

- A. Railroad crossing is ahead
- B. Recreation Area is ahead
- C. No right turn



**21. When driving, you should always**

- A. Pay attention to the front vehicle
- B. Estimate the following distance
- C. Be prepared to adjust your speed and change lanes

**22. A steady red traffic signal means**

- A. You may proceed after complete stop
- B. Slowdown and proceed if intersection is clear
- C. You should stop before the white lines

**23. Which vehicles are required to stop for the school bus**

- A. A & B
- B. A, B & C
- C. C Only



**24. When you see a pedestrian with service dog at an intersection, you should**

- A. Stop and give right-of-way
- B. Drive in a safe speed only
- C. Proceed only if you drive straight ahead

**25. When you are passed by a vehicle, you should**

- A. Increase the speed
- B. Change the lane
- C. Maintain a constant speed

**Mark the correct answers to the above questions.**

1. ☐ A ☐ B ☐ C
2. ☐ A ☐ B ☐ C
3. ☐ A ☐ B ☐ C
4. ☐ A ☐ B ☐ C
5. ☐ A ☐ B ☐ C
6. ☐ A ☐ B ☐ C
7. ☐ A ☐ B ☐ C
8. ☐ A ☐ B ☐ C
9. ☐ A ☐ B ☐ C
10. ☐ A ☐ B ☐ C
11. ☐ A ☐ B ☐ C
12. ☐ A ☐ B ☐ C
13. ☐ A ☐ B ☐ C
14. ☐ A ☐ B ☐ C
15. ☐ A ☐ B ☐ C

16. ☐ A ☐ B ☐ C
17. ☐ A ☐ B ☐ C
18. ☐ A ☐ B ☐ C
19. ☐ A ☐ B ☐ C
20. ☐ A ☐ B ☐ C
21. ☐ A ☐ B ☐ C
22. ☐ A ☐ B ☐ C
23. ☐ A ☐ B ☐ C
24. ☐ A ☐ B ☐ C
25. ☐ A ☐ B ☐ C

### **Correct Answers**

- |       |       |
|-------|-------|
| 1. B  | 16. C |
| 2. A  | 17. A |
| 3. A  | 18. A |
| 4. C  | 19. A |
| 5. A  | 20. A |
| 6. C  | 21. C |
| 7. A  | 22. C |
| 8. B  | 23. B |
| 9. A  | 24. A |
| 10. A | 25. C |
| 11. B |       |
| 12. A |       |
| 13. B |       |
| 14. B |       |
| 15. A |       |